

2024 Stewardship Report

School Sisters of Notre Dame
Atlantic-Midwest Province



YOUR SUPPORT

OUR IMPACT

Transforming the world through education

2024 Stewardship Report

is an annual year-end publication for family, friends and benefactors of the School Sisters of Notre Dame. You, our donors have entrusted us with your support of the SSND charism. This report shows the ways your support has impacted those we serve.

Your Impact in Action



Sister Betty Orr greets Schwester M. Dominica Michalke, General Superior during her recent visit to Villa Assumpta



Sister Kate Whalen with her students at Caroline House in Bridgeport, CT



Sisters Kathleen Jancuk and Phyllis McNally were honored at Bishop Walsh School (MD). SSND has served BWS for 117 years.

The mission of the School Sisters of Notre Dame

is to proclaim the good news, directing their entire lives toward that oneness for which Jesus Christ was sent. The Sisters make Christ visible through their very being and by their sharing of love, faith and hope. The Sisters express their mission through ministry directed towards education.

Cover Artwork:

Sister M. Monika Schulze, SSND

Cover Photos:

Sister Cathy Bonfield with her student at St. Martha's Catholic School in Sarasota, FL.

Sister Grace Sciamanna with one of her students at Caroline Center in Baltimore, MD

Sister Bernadette Alfieri with ESOL students at NDEC, Queens, NY.

Production and Design:

Laura E. Lang and Jamie C. Shannon

Contributors:

Mary Louise Chesley-Cora, Sr. Delia Dowling, Colleen Kammer, Laura E. Lang, Sr. Mary Lennon, Laurie Molner, Francine Poppa, Jamie C. Shannon

Contents:

2	Introduction
3	Welcome
4-5	SSND Sponsored Ministries - A New Way Forward
6-7	SSND Educational Center
8	Justice, Peace & Integrity of Creation - Five Focus Areas
9	Donor Spotlight - Mary Louise Chesley-Cora
10-11	Development News

Welcome from Our Provincial Leader



Dear Friends:

Imagine a sister dedicating her days to teaching children in underserved neighborhoods, sparking dreams of a brighter future, or educating women so that they have the knowledge and skills to begin a new profession that they can claim as their own. These moments of impact are possible because you believe in them, standing behind the School Sisters of Notre Dame with your unwavering support. Your generosity doesn't just help them endure - it empowers them to keep shining as a beacon of hope in a world that deeply needs it. Together, we ensure that the mission of SSND continues, touching lives and bringing hope where it's needed most. Thank you for making it possible.

Your belief in our mission inspires us to meet challenges head-on, innovate, and adapt in ways that truly make a difference. Your support doesn't just sustain us—it amplifies our impact, turning aspirations into reality for the many lives we touch. But as our numbers decrease, the weight of our mission grows heavier. Our commitment remains unshaken, yet we rely more than ever on supporters like you to carry our work forward. Your contribution enables us to support our sponsored ministries, train future leaders, and provide quality care for our retired sisters – with the love and dedication that has always defined us. As you read our annual Stewardship Report, you'll witness the everyday impact of SSND.

Your support – Our Impact.

Thank you,

Sister Charmaine Krohe, SSND
Provincial Leader

Atlantic-Midwest Offices:

Villa Assumpta

6401 N. Charles Street, Baltimore, MD 21212
410.377.7774

Villa Notre Dame

345 Belden Hill Road, Wilton, CT 06897
203.761.9732



2024 Sponsor Council

Standing: Sister Nancy Gilbriest, SSND Provincial Liaison to the Sponsor Council, Steve Cheeseman, Ed.D, President, National Catholic Education Association, Associate Mary Anne O'Donnell, Sister Carole Shinnick, SSND, Sister Charmaine Krobe, SSND Provincial Leader. Seated: Yvonne DeBruin, SSND Director of Mission Formation, Sister Delia Dowling, SSND, Chair, Dr. Gary Thrift and Associate Kathleen Sipes.



Notre Dame Prep at Marian House, Baltimore, MD

A New Way Forward

In the recent past, the Atlantic-Midwest Province has looked for a new way to strengthen our relationship between our sponsored ministries, as well as increase our support to assure the sustainability of these ministries, while promoting the SSND mission far into the future.

Attention to sponsorship goes back to 2002 when a meeting of SSND leaders from the then eight North American Provinces met to explore the meaning of “sponsorship.” The leaders adopted the following definition of sponsorship:

Sponsorship is the mutually beneficial and dynamic relationship between the congregation and an organization in which the SSND charism and educational vision (YAS #22) are defining characteristics.

Sponsorship is a gift of the SSND mission and vision to the people served and to the larger Church. The School Sisters of Notre Dame support, influence, and nurture the sponsored ministry. SSND gives its name and reputation to the ministry. The Provincial Council members serve as the Corporate Board and hold certain reserved powers. As available, Sisters serve on Boards of Trustees of the sponsored ministries. The sponsored ministries publicly identify with the mission, vision, and values of the Congregation, and provide regular accountability reports.

It has become clear that, as fewer sisters are serving in active ministry, the structure of the relationship between SSND and these incorporated ministries needs to evolve.

After years of study and preparation, the Provincial Council appointed a Sponsor Council, comprised of experienced educators who are Sisters, Associates, and lay persons. The role of the Sponsor Council is to nourish and strengthen the ministries and to advance the SSND mission into the future. The Sponsor Council exercises certain reserved powers; for example, the appointment of Trustees. The Sponsor Council is accountable to the Provincial Council.

Ministries, The Sponsor Council

Sister Delia Dowling, as chair of the new Sponsor Council, will lead SSND and the sponsored ministries into this new form of governance. Sister Delia assumes this new role after co-founding Sisters Academy of Baltimore and serving as President for 19 years. The members of the Sponsor Council are *Dr. Steve Cheeseman*, *Associate Mary Anne O'Donnell*, *Sister Carole Shinnick*, *Associate Kathleen Sipes*, and *Dr. Gary Thrift*. With this change in governance, one of the Sponsor Council members will serve as the contact to one or more sponsored ministries.

In the spirit of SSND, sponsorship is grounded in our heritage and at the same time, open to risk and transformation. Sponsorship as a ministry is one of possibility, which “demands a Christian vision of what the human person is called to be and what the world is destined to become.” (YAS 22) Above all, Sponsorship lives in faith, hope and prayer.

AMSSND Sponsored Ministries

1. **Notre Dame Preparatory School** is a college preparatory school for young women in Towson, MD.
2. **Academy of the Holy Angels** is a college preparatory school for young women in Demarest, NJ.
3. **Notre Dame of Maryland University** is a private Catholic university in Baltimore, MD.
4. **SisterHouse** is a faith-oriented community offering a temporary home to women seeking recovery from substance abuse in Oak Park, IL.
5. **Caroline House** educates women and children in the English language and life skills in Bridgeport, CT.
6. **Caroline Center** is a workforce development organization serving women in Baltimore, MD.
7. **Corazón a Corazón** offers one-on-one ESL tutoring and an after-school program serving the Latino community in Chicago, IL.
8. **SSND Educational Center** offers educational programs meeting the needs and interests of women of all races and faiths in Queens, NY.
9. **Notre Dame Learning Center** provides one-on-one tutoring in mathematics and reading to students in grades 1-9 in Rochester, NY.
10. **Marian House** is a community for women & their children who are in need of housing & rehabilitative services in Baltimore, MD.
11. **Mother Seton Academy** is a middle school for low-income boys and girls in Baltimore, MD.
12. **Sisters Academy of Baltimore** is a middle school for low-income girls in Baltimore, MD.



Sisters Academy of Baltimore



SisterHouse



Caroline Center



Notre Dame Learning Center



Level One ESOL Students at the Closing Ceremony



GED Class Field Trip to the Museum of Natural History in New York City



Writing Class Students

Within a safe and welcoming environment, the Center provides programs that educate and nurture the whole person. This Catholic sponsored Center is rooted in the belief that women are agents of transformation for the family, society, and the world. The School Sisters of Notre Dame Educational Center, Inc. located in Queens, New York, empowers underserved women of all races and faiths to reach the fullness of their potential.

Francine Poppo, SSND Educational Center Executive Director, shares her story:

How many clients do you serve annually?

Approximately one hundred. This year, we have 120 registered, which is the highest number we have had. With the support from SSND, since our inception, the Center has served almost 2,000 women.

Why is this work so important?

In addition to the practical outcomes of providing women with the tools of English language skills and/or with the education necessary to pass multiple subjects of the GED exam, the Center, enables the students to realize their human dignity and the support of a community of women across various cultures.

Many GED students are enrolled in our program because they know that if they lose their job, they will not get another job without a diploma. Several of our ESOL students have low-paying jobs in local stores and businesses, so more proficiency in English will allow them to advance professionally or obtain better positions. Seventy-five percent of all our students have children under the age of eighteen. The need for more proficiency in communicating with teachers and doctors is paramount.

Many of our students have bachelor's or master's degrees from their own countries. A better command of English will enable them to obtain jobs in the fields they have studied and/or to begin advanced studies with transfer credits.

How does SSND Educational Center live the SSND mission?

The SSND mission includes "Directing lives toward oneness, Transforming the world through education, Serving individuals and communities in need, Addressing urgent needs, and Transforming people."

We are doing all this through our presence, our example, our programs, our referrals, and our love.

Educational Center

What is your favorite part of your job?

My favorite part of the job is the connections I make with the women we serve and hearing their stories of transformation. I also love that every single person with whom I work wants to do good and be love in the world.

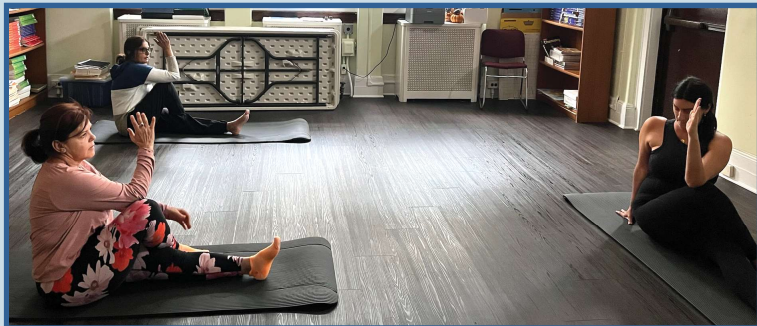
What is the hardest part of your job?

The hardest part of my job is deciding which of the many visions and concrete ideas are the most meaningful and effective ones to implement at any given time. The needs of the women and families in our community change — sometimes daily. Meeting needs is always a challenge!

Share a success story.

Recently, we invited one student from our GED program and one from our ESL program to write and present a speech at a donor appreciation event. Each student eagerly accepted the invitation and used the resources of the Center - laptops, our teachers, staff members, and other students, to prepare. The GED student used an interview style, and she asked me to suggest interview questions. She rehearsed for weeks! The ESL student wrote the speech entirely on her own, enlisting the help of a friend just to check her grammar. She practiced in front of classmates for feedback. On the day of the event, these students arrived dressed up and fully prepared to speak. They each spoke beautifully and with confidence about their individual experiences. This was so heartwarming. However, we also noticed something we had not ever expected—both students “worked the room.” They walked around, shaking hands with donors, engaging in conversation, and owning their places among these professionals. The next day, the GED student came to me and said “one of our donors offered to write me a letter of recommendation when I graduate and to introduce me to our state senator. I want to make sure I follow up with him.”

That is impact!



GED Students at Yoga Class with Volunteer Instructor



Level 2 ESOL Class using the Technology Center



Students at Closing Ceremony



Students making connections

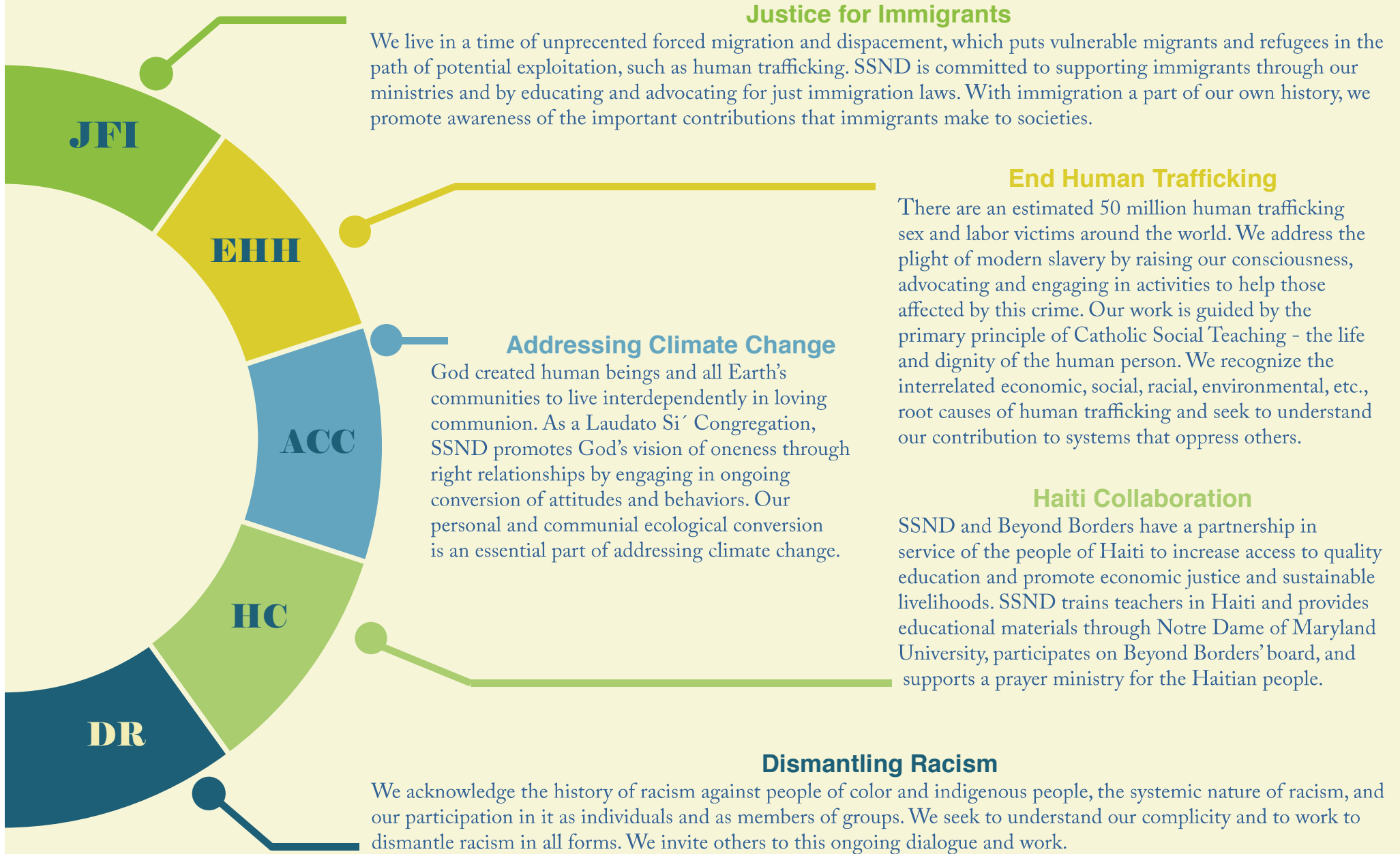


Closing Ceremonies for students

Our Impact - Justice, Peace & Integrity of Creation

Five Focus Areas

As a Laudato Si' Congregation we approach our justice work from the standpoint of the intersectionality of these areas.



Your Support - Donor Spotlight

Mary Louise Chesley-Cora

St. John's Catholic School, Frederick, MD '59, College of Notre Dame, Baltimore, MD '64, Former SSND

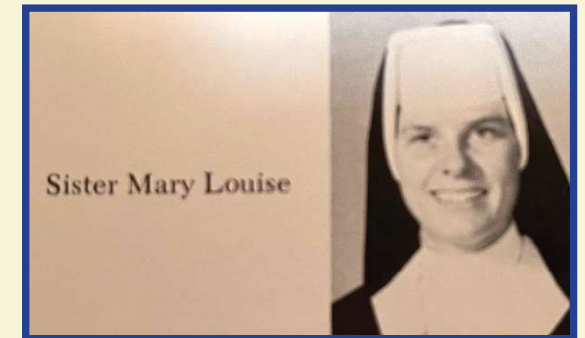


Reflecting on my SSND life brings up a wealth of cherished memories and experiences. It feels like I could write a book! My journey was filled with unique moments shaped by time and place. One such moment was working under Sr. Marie Carmel Galligan, my high school principal, who later became my first Superior at Notre Dame Academy in St. Petersburg, FL. I was there from the first graduating class in 1964 until the school's merger in 1972, teaching music, French, and theology, directing the Glee Club, and forming lifelong bonds with students and colleagues.

In 1967, I led students on a six-week study trip to France with my former teacher, Sr. Mauro Manna, whose influence inspired my love for French. With encouragement, I earned an MA in French and an MAT in Religious Studies. My journey then led me to Parish Ministry at the Interfaith Center in Columbia, MD, working alongside Sr. Anne Marie Gardiner. Later, I moved to Our Lady of Nazareth Parish in Roanoke, VA. After leaving the congregation, I married my dear friend George. We shared various ministries together for 36 years after moving to Delaware in 1979.

Growing up, I was blessed with SSNDs throughout my education at St. John's in Frederick, MD, especially figures like Sr. Cora Lee Middleton, Sr. Cathy Arata, Mother Maurice, Sr. Maura Eichner and many others who left a lasting impact. My class included wonderful mentors like Srs. Kathleen Cornell, Sharon Slear, Mary Fitzgerald, Carol Gnau, and Jeanne Hildenbrand. Many have since "joined the ancestors," yet their spirit continues to inspire me.

I am deeply grateful for these extraordinary women and the lasting legacy of their love, mentorship, and dedication.



Our Impact - Upcoming Events

Thursday, April 10, 2025

Leadership Luncheon 2025, Elmhurst, IL

Speaker: Dr. Maggie Flanagan, discussing her experience as Director of the Nun Study

Sunday, May 4, 2025

Alumni Event, St. Catherine's Parish Center, Trumbull CT

Saturday, June 14, 2025

Alumni Event, Cafe Escadrille, Burlington, MA

For more information, visit www.amssnd.org/events

Your Support - Planned Giving

5 Steps to Begin Your Estate Planning

A proper estate plan ensures that your intentions for family, other loved ones, and perhaps your favorite charities are properly met.



Step **ONE**

Inventory your assets.

Compile a list of all of your assets and their value. Once you've got it all organized you can start thinking about what to do with it.



Step **TWO**

Think about your priorities.

Before you get down to the specifics of planning, consider your priorities and goals. What are you looking to achieve?



Step **THREE**

Identify your beneficiaries.

Make a list of the individuals and organizations that you wish to provide for in your estate plan. Note any conditions that might determine the method and circumstances.



Step **FOUR**

Call a family meeting.

If applicable, work closely with your spouse. Coordinating plans between spouses often leads to additional savings for your estate. You may also want a meeting to discuss your plans with children or other family members.



Step **FIVE**

Seek professional assistance.

Even if you only need a simple will, it is advisable to seek the help of a qualified attorney and, as needed, other professional advisors. Professional guidance is most often a worthy investment to ensuring a proper plan.

Impact the Future

If you are passionate about School Sisters of Notre Dame or perhaps are grateful for the education that you or a loved one received, you may wish to consider including SSND in your will.

Known as a bequest, this forward-thinking gift has several advantages.

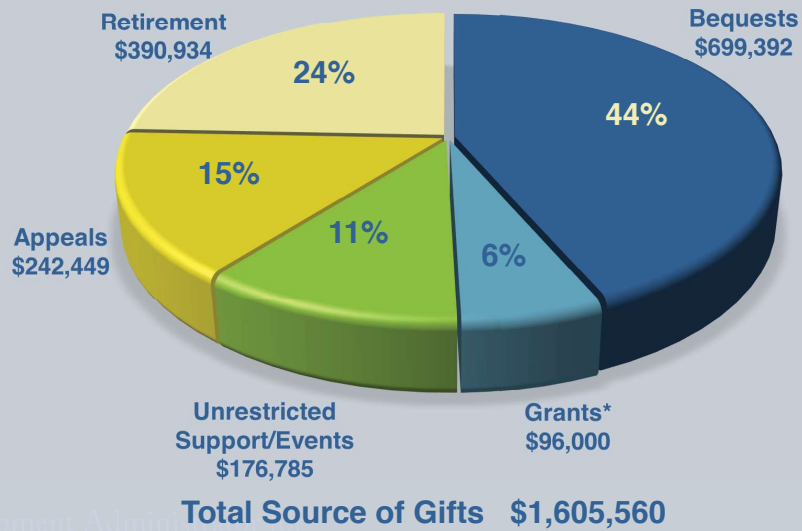
- **It's Simple.** Typically all it takes is one sentence in your will or trust.
- **It's Versatile.** Leave a dollar amount, a percentage of your estate, or the remainder of your estate after providing for your loved ones.
- **No Immediate Cost.** Your gift will not affect your current cash flow and always allows you to maintain control of your assets.
- **Specific Impact.** Your gift can be designated to a specific area of interest or need. Or, you can let us decide how best to use it.
- **Flexibility.** You can adjust or even cancel your gift if circumstances change.

For more information, contact Jamie Shannon at jshannon@amssnd.org.

Your Support - 2024 Fiscal Year Report

Jamie C. Shannon

SOURCE OF GIFTS



USE OF GIFTS



Development Admini

Planned

jshannon@amssnd.org

* Excludes Hilton Foundation Grant for Haiti (\$174,697)

DEVELOPMENT STAFF

Laura E. Lang
 Director of Development
 llang@amssnd.org

Laurie Molner
 Associate Director of Development
 lmolner@amssnd.org

Jamie C. Shannon
 Development Administrator of
 Planned Giving & Operations
 jshannon@amssnd.org

Jennifer Chrysadakis
 Database Administrator
 jchrysadakis@amssnd.org

Sister Leonora Tucker, SSND
 Development Assistant
 ltucker@amssnd.org

John McKeon
 Development Volunteer

SAVE THE DATE



School Sisters of Notre Dame
Atlantic-Midwest Province

6401 North Charles Street
Baltimore, MD 21212

LEADERSHIP LUNCHEON 2025

SPONSORED BY THE SCHOOL SISTERS OF NOTRE DAME

Thursday, April 10, 2025

12 noon

Clarion Inn Elmhurst - Oakbrook

933 South Riverside Drive, Elmhurst, IL 60126

Speaker: Dr. Margaret (Maggie) Flanagan

Associate Professor of Pathology and Laboratory Medicine at the
University of Texas Health Science Center San Antonio

Bringing her experience as Director of the Nun Study,
Dr. Margaret Flanagan's keynote speech will examine the prediction,
prevention and treatment of Alzheimer's disease and other dementias.



Invitations will be mailed in January 2025

Sponsorship Opportunities are Available

For more information, please scan the QR code or visit our website at
<https://atlanticmidwest.org/events/leadership-luncheon>

www.atlanticmidwest.org